

Report to the Community

EMERGE

SEPTEMBER 1, 2020 – AUGUST 31, 2021



NATURE CENTER
AT SHAKER LAKES
CONSERVE. CONNECT. INSPIRE.



Dear Friends,

It seems in the blink of an eye, our five-year capital campaign, *Enhancing Your Outdoor Classroom*, has come to an end. We have emerged!

After previous years' enhancements, including the new Lavelle Family Amphitheater and the rebuilt and improved All People's Trail, this year brought our complete vision of a restored and reinvigorated outdoor classroom to life with:

- The full renovation and restoration of the Stearns Woodland Trail.
- The new Carfagna Family Nature Play Area.
- The construction and grand opening of Jimmy's Treehouse.
- The creation of more welcoming neighborhood trailheads connecting to West Park and South Park Boulevards.
- The building of a new Sustainability Hub and parking lot enhancements.
- The final phase of a multi-faceted habitat restoration project across our 20 acres, improving the quality of habitats on our site, creating a more biologically diverse ecosystem for wildlife to thrive, visitors to enjoy, and students to study.

These amazing new trails and features are now enjoyed by our community every day and will help future generations to develop deeper connections with the natural world.

As we emerge from our campaign, we can now admire the transformed space. What was once a lovely, but somewhat outdated site, is now an active destination, attracting school groups and visitors of all ages and abilities. Our campaign team poured their hearts and souls into this work. Everyone from staff, to our campaign committee, to the members of our Board of Trustees should feel extremely proud of what we accomplished. With their leadership, and the support of our entire community coming together to help us exceed our \$6.1M fundraising goal, we completed the campaign on time and on budget!

We also must acknowledge the extraordinary work of our staff and volunteers who, while navigating a global pandemic, maintained our momentum and kept us operating safely and successfully throughout. Although the pandemic is still at the forefront of so many people's lives and has affected our daily routines in profound ways, we adjusted to a new normal here

at the Nature Center and continued to serve our community and steward our precious habitat. This past spring, we held our 37th Annual Plant Sale which broke sales records and inspired those in our community to learn about native gardening, creating diverse native ecosystems in their own backyards. In May, we hosted an extremely successful Annual Benefit. After over a year of online, virtual events, Nature at Night was one of the first large in-person gatherings in the region, and guests enjoyed reconnecting with friends safely outdoors while supporting our mission and annual operations. We also welcomed back summer campers and the squeals of curious children throughout our property was a delightful sound. What a year!

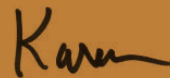
Much like a butterfly emerging from its chrysalis symbolizes a rebirth and transformation—we, too, feel as though the Nature Center at Shaker Lakes has emerged. We have emerged from a global crisis throughout which we continued to provide an important and safe place for outdoor education, respite, and mental health. We have emerged from a major restoration of our outdoor classroom—stronger, more resilient, and more connected to the community we serve. This year, however, was very special and symbolic. We feel renewed and revived, and ready to spread our wings.

Thank you for your continued support, which allows us to fulfill our mission each and every year.

With gratitude,



KAY CARLSON
PRESIDENT & CEO



KAREN KIDWELL
CHAIR, BOARD OF TRUSTEES



Environmental Education Programming Pushes Through Pandemic



4,965

*Children
Immersed in Outdoor
Education*



421

*Camp
Attendees*



344

*Hours of Teacher
Professional
Development*

by Erica Prange, Director of Education

This past year brought many challenges, but we continued reaching students by transforming our environmental education curriculum into a virtual experience. Without the Nature Center building to use for classroom space from March 2020 to May 2021, we were at a disadvantage. However, our virtual video series of nature scavenger hunts and outdoor observation challenges encouraged students to explore outside in their own neighborhoods or school yards. Students were also invited to enjoy the Nature Center trails in person with friends or family. The Nature Center trails, streams, and even birds all made appearances in the videos' carefully curated programming as we connected the observations staff were making at the Nature Center to outdoor explorations the students could do from home.

Thanks to generous support from donors, students from the Cleveland Metropolitan School District were able to receive tools to use during these programs. PreK, K and 1st grade CMSD teachers were given a set of magnifying lenses and a book for their classrooms, while students participating in the Environmental Educator in Residence Program (an intensive, 20-program series) received backpacks filled with materials to be used, like thermometers, owl pellets, and tweezers.

As the 2021 Outdoor Adventure Camp season approached, the months spent researching the best COVID safety practices paid off as we welcomed children back to the Nature Center for the first time in over a year. Childrens' footsteps and laughter became a regular part of the Nature Center again, and the trails were full of campers rolling logs, splashing in the stream, searching for wildlife, and even helping with habitat restoration efforts. In addition to our traditional Outdoor Adventure Camps, we also launched new programming, including single-day "pop-up" camps and summer enrichment programming in partnership with the Cleveland Metropolitan School District.

Despite its challenges, 2021 gave us excellent opportunities to creatively reimagine our programming and savor those moments that make us remember why what we do is so important.

Fostering a Connection to Nature Through Play



143,231

Trail Visits



1,562

*Family & Adult Education
Program Attendees*



125%

*Increase in Visits to
Stearns Woodland Trail*

By Alexandria Yurosko, Content Marketing Manager

As an increasingly digital society moves children and families indoors, the Nature Center at Shaker Lakes' (NCSL) mission hinges on reversing that shift by creating opportunities for everyone to connect with nature. In 2020–2021 during the height of the pandemic, the Nature Center saw a significant increase in outdoor visitor traffic. Families were seeking safe, fun opportunities and NCSL was able to provide that. During this time, NCSL staff and leadership were intent and remained focused on using this new resurgence in love for the outdoors to push forward with the capital improvements planned through our recent campaign.

There is ample research to demonstrate engaging in nature has huge health benefits, especially for children, so a Nature Play Area was a clear priority to support our mission. Unstructured nature play and outdoor experiences “positively impacts children’s cognitive development, along with influencing outcomes related to physical activity, fitness levels, motor skills, social skills, emotional well-being, and creativity.” (Psychology Today, 2020).

Through the support of the capital campaign, the Carfagna Family Nature Play Area opened late summer 2021 as an inviting space to encourage creativity and free nature play. Easily accessed from the Stearns Woodland Trailhead, the Nature Play Area and adjacent streamside deck features spiral stump hoppers, balance beams built from sturdy branches, and a section of a 300 year-old Moses White Oak Tree that had fallen in a recent microburst for observation and exploration. Elements also include various natural structures and movable materials and provide a place for children to actively engage and play in nature.

In addition to the Nature Play Area, children more deeply engage with nature through the beloved creek walks during summer camp and through classes held at the Nature Center on topics such as water quality, biodiversity, and other hands-on lessons.

Building Community through Annual Events



\$331,006

Raised through Fundraising Events



400+

Plant Sale Orders



350+

Nature at Night Attendees

by Rosalind Soltow, Membership & Development Operations Manager

The Nature Center is so much more than its building and 20 acres. It's an entire community of advocates, donors, members, volunteers, and visitors who support our mission through contributions, participation, and attendance year over year. Creating lasting relationships with this network of supporters enables us to work together to accomplish our shared goals of providing environmental education and preserving nature. The pandemic made strengthening those relationships more challenging, but the Nature Center took advantage of the opportunity to forge new connections and strengthen relationships with the return of in-person events.

The Hike, Run & Fun event in September 2020 offered the community one of the year's only in-person 5K races and featured socially-distanced hikes for youth and adults. In addition to supporting our ongoing operations, a portion of the event's proceeds supports the Jenny Goldman Fund, which helps underwrite the Nature Center's environmental education programs.

We safely held our 37th Annual Plant Sale in May. With the resurgence of interest in gardening, we were thrilled to help both novice and seasoned gardeners discover the importance of planting native species. We were overwhelmed when our online catalog sale sold out in just two weeks, and seeing and greeting our shoppers on Plant Sale Day warmed our hearts. Additional donations to the Plant Sale were designated toward the Barber Habitat Restoration Fund, which supports the comprehensive restoration of our habitats.

In June, our annual benefit, Nature at Night, was a great success. After hosting it virtually in 2020, the return of this year's in-person event was extra special. Guests gathered together for an evening of culinary favorites, crafted cocktails, and good conversation with friends. We heard countless times from guests how happy they were to finally be able to come together again for a common cause.

Through individual donations, foundation support, corporate sponsorships, ticket and ad sales, and registration fees, we raised the critical funds needed to facilitate the Nature Center's education programs, habitat preservation, and ongoing operations. We are grateful for the generous and steadfast support of our entire network of supporters over the past year.



Team Effort to Continue Conservation Work



1,179

Hours Spent on
Conservation/Stewardship



5

Acres of Invasive Species Removed



6,300

Native Species Planted

Conservation is a core pillar of the Nature Center at Shaker Lakes' mission, and each year Natural Resources Manager Nick Mikash works to promote sustainable habitats across our 20 acres of land. While Nick and his team work hard, their significant progress this year wouldn't have been possible without donor support, many volunteers, and a Summer Stewardship Intern.

A critical grant from the Cyrus Eaton Foundation enabled the Nature Center to hire a Summer Stewardship Intern, Owen Barnard, who worked 300 hours during the summer of 2021. Owen assisted with the restoration of floodplain forest, shrub swamp, upland forest, and riverine marsh habitat surrounding the Stearns Woodland Trail.

The Stewardship Intern position allowed us to exceed our goals for this growing season, helping us to plant 2,210 native trees, shrubs, and perennials throughout a 12-acre area. Owen led groups of Summer Stewardship Volunteers to remove invasive species, plant native trees and shrubs, and maintain these new plantings by watering and erecting deer fencing. He also led volunteers in other important projects, such as maintaining our trails and picking up 50 pounds of trash from our site and the Doan Brook corridor.

In addition, Volunteer Coordinator Jeanette Moore was able to safely maintain volunteer programs for the Nature Center following health guidelines from the CDC. The work of NCSL staff, volunteers, and the Stewardship Intern during the 2021 growing season contributed to a larger, multi-year effort to restore the habitat on our 20-acre property. Since 2019, we have removed approximately five acres of invasive shrubs and installed over 6,300 native plants.

We have secured a grant from the federal Great Lakes Restoration Initiative to plant 1,000 trees this coming spring. Thanks to our Stewardship Intern, we were able to clear invasive species in the areas where these trees are slated to be planted. Next summer, our Stewardship Intern will be focused on planting trees in areas dominated by beech trees that are vulnerable to beech leaf disease.

As you walk our trails this winter, look for potted shrubs, live stakes (which look like sticks, but will grow into shrubs), and perennials. Removing invasive plants will allow native species to re-establish over time, and we do this gradually to ensure there is usable habitat for animals who need it now.

Thank You

to the many volunteers who gave of their time and energy in support of our mission during the past year.

We are extremely appreciative of your service!



353

Unique Volunteers
(including Trustees)



5,066

Total Volunteer
Hours



\$129,025

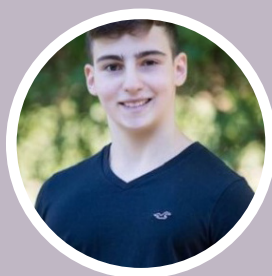
Value of
Volunteer Time



525+

Trustee Hours
Volunteered

YOUTH VOLUNTEER OF THE YEAR CHASE SLOAN



Chase Sloan, a junior at Hawken School started with us as a four-year-old camper and began volunteering with our Outdoor Adventure Camp at 13 years old. Every summer, Chase's dedication to inspiring, encouraging, and helping campers to have fun while respecting the environment shines through. This summer we had lots of first-time teen volunteers and Chase took time to share great tips and advice with them. When not volunteering at the Nature Center, Chase is baking cakes and raising money for cancer research as the author of a recipe book, "Cakes for Cancer."

"This summer was really special, it was nice to come back after not seeing kids and being in the Nature Center for a year. I loved seeing all these little kids that were excited to be back, enjoying nature and camp, even with changes for COVID safety. It has been good to see the Nature Center with all the new adaptations and it was almost like it was new to me as well!"

"It has been good to see the Nature Center with all new adaptations..."



VOLUNTEER OF THE YEAR IAN ASHTON



Ian Ashton, a service missionary majoring in biology, began volunteering for the Nature Center in spring 2021. Right away, Ian volunteered twice a week as a Stewardship Assistant and a Trail Ambassador, adding Nature Guide not long after. When assisting with stewardship, Ian gives 110%, regardless of the project and enjoys learning more about the environment as he helps to care for it. Ian then, with a smile, hits the trails and shares some of that knowledge: helping us create a warm and welcoming atmosphere for our visitors. In addition to volunteering for the Nature Center, Ian volunteers for his church, The Church of Jesus Christ of Latter Day Saints with hunger and literacy initiatives.

"One day when we were working on bark stripping in the Nature Play Area, we found an interesting caterpillar and Nick Mikash identified it as a tussock moth caterpillar. Looking back, it was a moment of hard work and sweat, but it impressed me that Nick had the patience and took the time to identify and teach us about this caterpillar. This story embodies for me what's so great about the Nature Center, a lot of effort goes into the work we do, but we still take time to appreciate the beauty of the nature that is all around us."

"...a lot of effort goes into the work we do, but we still take time to appreciate the beauty..."



Evergreen Society— In Memoriam



—
**MARGE
DROLLINGER**
—

The Nature Center at Shaker Lakes recently lost two close friends and long-time supporters who leave behind a legacy of leadership and service to our community and the environment.

A life-long Clevelander, Marjorie “Marge” Drollinger raised her family in Shaker Heights. As one of the original “Ladies in Tennis Shoes,” she helped establish the Nature Center after winning the Clark Freeway fight. Marge took on many responsibilities at the Nature Center over the years, including joining the Board of Trustees, managing the Duck Pond Gift Shop, and serving on several committees. In recognition of her impact, Marge was named an Honorary Life Trustee in 2007.



—
**KITTY
MAKLEY**
—

Kathryn “Kitty” Makley also raised her family in Shaker Heights. Active with numerous causes in the area, Kitty first became involved with the Nature Center as a volunteer and ultimately served on the Board of Trustees from 1991-2007. During her term as Board President, she initiated the Nature Center’s major fundraising events. Most recently, Kitty’s dedication led her to serve on the committee for our recent Enhancing Your Outdoor Classroom capital campaign.

In addition to their ongoing support over the decades, Kitty and Marge understood the importance of leaving a lasting legacy for the environment and the future of our park. As members of our Evergreen Society, they both included the Nature Center in their estate plans.

Joining the Evergreen Society is a wonderful way to ensure the Nature Center continues to be a vibrant part of our community for generations to come. To learn more about planned giving opportunities, please contact Rob Sikora, Chief Development Officer at 216.321.5935 ext. 223 or sikora@shakerlakes.org.



Thank You
to all those who
supported this vision.
Together, we built
the future of the
Nature Center!

ABHI & LIBBY RAY

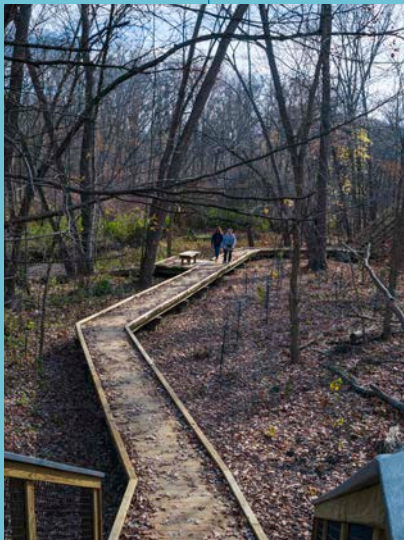


MEMBERS SINCE 2018

"The kids have really enjoyed playing in the treehouse. It's such fun to feel like you're in the middle of a forest amongst all the beautiful foliage!"

99

JOANNE BLANCHARD



NORMA STORER



66

MEMBER SINCE 2017

Welcome Desk Volunteer

"The Gazebo is probably my favorite feature. It's beauty, uniqueness, location, provide a wonderful focal point and restful place to sit. During the COVID-19 pandemic it has been such a joy to see so many people, including the elderly and people with disabilities using the All Peoples' Trail."



**ENHANCING
YOUR OUTDOOR
CLASSROOM**

CAMPAIGN for
THE NATURE CENTER
at SHAKER LAKES

JANE PETERSON & PHIL STAR



MEMBERS SINCE 1990

"We love that we can walk over to the Nature Center from our house and the new entrances make accessing it even easier."

”



LAUREN SCHMIDT



“

"I love how the new ADA-accessible trail enhancements include larger gathering spaces for my classes to spend more time in discussion and observation. From the treehouse to the gazebo, the new improvements provide ample opportunity for us to learn together outside."

JANIE & HELEN RAPP



"The Nature Center has been so helpful in making me feel included. The improvements to the All People's Trail were well thought out, planned and designed so no one would be excluded. This has meant everything to us. It's very nice for people of all disabilities and abilities, alike."

”



An invaluable community treasure for all for decades to come.

Nature Center Staff

Kay Carlson, President & CEO

Cara Anderson, Visitor Services Associate

Madi Bacci, Natural Resources Technician + Seasonal Environmental Educator + B'earthday Party Educator

Shelley Bender, Environmental Educator

Christi Carlson, Interim Rentals Manager + Administrative Assistant

Mary Jo Ciuni, Environmental Educator

Lisa Golba, Environmental Educator

Eric Gregorchik, Director of Facilities Operations

Christopher Hall, Director of Finance and Administration

Michelle Hall, Accountant/Bookkeeper

Katrina Heinzen, Seasonal Environmental Educator + B'earthday Party Educator

Nicole Hindman, Environmental Educator

Marcia McNallie, Events & Community Engagement Manager

Nick Mikash, Natural Resources Manager

Julia Mitchell, Grants Manager

Jeanette Moore, Volunteer Manager

Emily Penn, Natural Resources Technician

Erica Prange, Director of Education

Meri Ruble, Seasonal Environmental Educator

Greg Sabin, Visitor Services Associate + Interim Facilities Assitant

Lauren Schmidt, Outdoor Adventure Camp Manager

Robert Sikora, Chief Development Officer

Rosalind Soltow, Membership & Development Operations Manager

Margaret Stamm, Visitors Services Associate + B'earthday Party Educator

Tania Younkin, Director of Marketing and Community Engagement

Alexandria Yurosko, Marketing Content Manager

Andy Weiss, Visitor Services Associate

Wendy Weiss, Visitor Services Associate

Rachel Weller, Visitor Services Coordinator

*AS OF NOVEMBER 18, 2021

Board of Trustees

CHAIR

Karen G. Kidwell

EXECUTIVE COMMITTEE

Erin B. Connell

Justin M. Croniser

James T. Dixon

Jon E. Fowler

Jeanne V. Gordon

Meghan B. Hunter

Graham P. Hearn

Daniel A. Waters

BOARD MEMBERS

Sandeep Bhatia

Kathryn D. Blaszak

Leigh H. Carter

Martha A. Connell

Thomas A. Danford

Laura H. Dean

Beth H. Gillespie

Douglas A. Katz

David J. Kaufman

Stephen D. Kresnye

Michael J. Moran

Kate F. Nagel

Meredyth J. Ralph

Carrie B. Shelfer

Terri Wade-Lyles

HONORARY LIFE TRUSTEES

Marjorie M. Drollinger

Cynthia M. Klug

Clara T. Rankin

Sally R. Schulze, Ph.D.

Julie A. West

ENDOWMENT FOUNDATION TRUSTEES

A. Chace Anderson

Cynthia Bassett

William G. Batcheller

David C. Fulton, Jr.

Margaret R. Giltinan

*AS OF NOVEMBER 15, 2021

Volunteers

200+ HOURS

Julie West

Laura Gooch

100-199 HOURS

Ashley Register

Camryn Koonce

David Hackney

Dick Obermanns

Ian Ashton

Jaylah Alexander

Ruffing Montessori

50-99 HOURS

Allen Yu

Asher Hardis

Daly Harbold

Evelyn Macklin

Karen Ault

Madeleine Fraser

Margaret Poutasse

Matilda Spadoni

Meredith Sundahl

Morgan Jodzio

Peter Calkins

Sarah Holbrook

Talia Kansal

Tavish Sweeney

Willie Jackson Jr.

Wyatt Gerber

20-49 HOURS

Abby Lambert

Abigail Liska

Alaire Bang

Allison Lim

Arianna Skowronski

Barry Edwards

Bela Anand-Apte

Caitlyn Klug

Charlize Ford

Chase Sloan

David Banks

Derrick Cooper

Elena Kessler

Ella Kijewski

Eva Nieman

Grace Bourdrez

Hannah Whitney

Henry York

Jenna Loveman

Karin Tanquist

Kathleen Hayes

Kim Pastik

Lisa Gannon

Luke Grube

Luke Jennings

Madeline Kelly

Marilyn Singer

Mike Sustin

Norma Storer

Peggy Thompson

Raina Vakharia

Sam Peron

Samir Khatri

Sheridan Sweeney

Sophie Grimes

Stephanie Berhannan

Sydney Thornton

Taye Ziv

William Stewart

Yvonne McDermott

Our Supporters*

EVERGREEN SOCIETY MEMBERS

Anonymous Members (3)

Jane Busch

Kathryn A. Carlson

Ruth Anna Carlson & Albert Leonetti

Sharon A. Coyle

Ruth J. Skuly & Leo A. Deining

Mrs. John Drollinger, Jr.*

Kathy & Tom Heffernan

Ann T. Herbruck

Mr. & Mrs. John E. Horner

Mrs. Carol J. Kass

Mr.* & Mrs. Walter C. Kelley

Patricia & S. Ernest Kulp, III

Dr. & Mrs. John T. Makley*

Lynda & Charlie Mayer

Edith D. Miller

William & Margaret* Mitchell

Michael & Courtney Novak

Mrs. Alfred M. Rankin

John B. & Sally R. Schulze

Deborah A. Smith

Kempton & Nancy King Smith

Julie A. West

*deceased

*AS OF NOVEMBER 15, 2021

IN HONOR OF

Mike Bloomfield

The Bodmann Family

Steve Cagan

Erin Connell

Lincoln Cousins

Tug Goddard

Laura Gooch

Ashley Hall

Kathy & Tom Heffernan

Bob & LaVerne Keske

Duncan Lockwood

Susan Reis

Leslie Sugiuchi

IN MEMORY OF

Mary Ann DelMedico

Marjorie Drollinger

Christopher Gibbon

Barbara Ginn Griesinger

George Gross

Carol Himmelsteib

Brian Horwich

Jane Kilroy

Betty Madden

Laurie Gibbons Marotta

Anne Mulligan Marcus

George L. McGaughey

Betty Millerb

Jean Rafferty

Thomas Rickelman, Sr.

Judy Rosselli

Jim Schmiel

Vicki Seewald

Alexa Sulak

Jessica Van Dyke

Christopher Waters

Loren Weiss

Woybor Woyczynski

ORGANIZATIONAL FUNDS

Barber Habitat Restoration Fund

Jean Eakin Fund*

Jenny Goldman Memorial Fund*
Maria J. and William Aubrey Hall
Endowment*
Shaker Lakes Regional Nature Center
Endowment Foundation

*Held at the Cleveland Foundation

CORPORATIONS & FOUNDATION

Anonymous (2)
Abington Foundation
Absolute Precision Landscape and
Supply, LLC
AHS Foundation
Anchor Landscaping
Avalon Gardens Nursery and Inn
Banks-Baldwin Foundation
Earthshare Chapters
Cirrus Wealth Management
CLE Landscaping
Clearstead Advisors, LLC
Cleveland-Cliffs Foundation
The George W. Codrington
Charitable Foundation
Cornerstone Family Office, LLC
Curb Appeal Painting
Dominion Energy
Cuyahoga Arts & Culture
Cuyahoga County Solid Waste District
David and Inez Myers Foundation
Deloitte & Touche LLP
Doan Brook Watershed Partnership
Dominion Energy Charitable Foundation
Cyrus Eaton Foundation
Edward Jones Investments
Phyllis H. & Williams H. Evans
Charitable Foundation
Evarts Tremaine
Exscape Designs
F. Buddie Contracting, LTD
Finley Landscaping Service
The Harry K. Fox and Emma R. Fox
Charitable Foundation
Fresh Fork
Benevity Community Impact Fund
Good Nature Organic Lawn Care
Hamilton Beach Brands
Hathaway Brown School
Heinen's Fine Foods
Higley Fund of The Cleveland Foundation
HMA Promotions, Inc.
Independent Tree LLC
Jackson Lewis PC
Kaulig Foundation
KeyBank
Kirtland Bird Club
Milton A. and Charlotte R.
Kramer Foundation

Monarch Joint Venture
Laurel School
Leikin Motor Companies
McDonald Hopkins LLC
LNE Group
Martha Holden Jennings Foundation
Merck Foundation
Meritech
MetLife Legal Plans
Middle Ridge Gardens
Montessori Development Partnerships
The Murch Foundation
National Environmental
Education Foundation
Nordson Corporation Foundation
Northeast Ohio Regional Sewer District
Northeast Ohio Sierra Club
Parker Hannifin
Plymouth Church of Shaker Heights
PNC
Progressive Insurance Foundation
Riot Games, Inc.
Roeder Consulting
RPM International Inc.
Rust Belt Riders
The Sam J. Frankino Foundation
Scioto Gardens
Shaker Lakes Garden Club
The Sherwin Williams Foundation
Mary Slingluff
Kelvin and Eleanor Smith Foundation
Wine Spot
The Helen F. Stoller and Louis Stoller
Family Foundation
The Lubrizol Foundation
Third Federal Foundation
Thomas H. White Foundation
UBS Financial Services, Inc.
United Way of Greater Cleveland
United Way of Greater Lorain
United Way Worldwide
Uvas Foundation
Veritext Legal Solutions
The George Garretson Wade Charitable
Trust #2
Wellspring Financial Advisors
Western Reserve Historical Society
Whole Foods Market

INDIVIDUALS

Anonymous (7)
Paul & Connie Abbey
Louise Abrams & Robert Fuerst
Albert T. Adams
Adelson Family
Patricia Agatista & Gerald Boyle
Bruce H. Akers Fund
Diana Petruskas & Amie Albert
Brian L. Larson & Laurie Albright

Harriett Allen
Murray & Connie Jean Altose
Bela Anand-Apte
Chace & Josie Anderson
Marnee & Brendan Anderson
Oakley V. Andrews
Michelle & Vic Anselmo
Christina & Michael Antenucci
Tim and Susan Armstrong Charitable Fund
Gail & Jim Arnold
Hannah Arnson
Mary & Philip Bailin
April & Adam Bain
Kirk Baird
Gail Baker
John C. Barber
Thomas Barnard
David S. Barnes MD & Elizabeth S.
Babcox MD
Jacqueline & Harvey Barnett
John E. Barnett MD
Carolyn & Douglas N. Barr
Margaret Barratt
Dennie & Kathleen Barrie
Lin & Chris Bartel
Kimberly Barton & Douglas Orr
Patricia Barz & Herbert Wiedemann
Joan & Benico Barzilai
Brian Bash
Marjorie & James Bashaw
Cynthia Bassett
Laura Bauschard
David Beach & Constance Magoulas
Alexis Beachdell
Kelly & Chris Beiswenger
Heather Bell
James R. and Victoria S. Bell Gift Fund
Megan Bennett
Berger-Haylor Family Fund
Jane Haylor & Mel Berger
Molly Berger
Conni Bergmann
Bergman-Rauss Donor Advised Fund of
the Jewish Federation of Cleveland
Sandeep Bhatia
Dr. & Mrs. Thomas E. Bier
Shane McRann Bigelow
Rebecca & Fisk Biggar
Annie Bill
Bishko Family Philanthropic Fund of the
Jewish Federation of Cleveland
Katherine Bissett
Gerald J. Blake & Susan Kaeser
The Blaszk Family
Richard & Kathryn Blaszk Charitable Fund
Tyler S. Bobes
Margaret & Richard Bodmann
Jeffrey Bomberger & Elaine Thallner

Elon Boms
Ashley & Michael Boorstein
David Christopher Bores
Amy & Andrew Bouthilet
Mary & John J. Boyle, III
Michael Bozzo
Amy & Stanley Brady
Patrick Bray
Arielle and Jerald Brodkey Philanthropic
Fund of the Jewish Federation
of Cleveland
Amy & Seth Brodsky
Arthur V.N. Brooks*
Jeanette Brown
Taelor & Taylor Brown
Andrew Brumbl
Joan Trey & Daniel Brustein
Gary L. Bryenton
David W. Burke
Eileen M. Burkhardt & Co, LLC
Jane C. Busch
Mary L. Cahen
Katie Callahan
Ronald Campbell
The Thomas Campbell Giving Fund;
In the name of Kathy Cole-Kelly
William E. & Annette M. Cappaert
Joanna & Peter E. Carfagna, Jr.
Alyson & Michael Carfagna
Peter A. & Rita M. Carfagna
The Carlson Family Fund of the
Cleveland Foundation
Harry & Mary Ann Carlson
Kathryn A. Carlson & Richard G. Albaugh
Ruth Anna Carlson & Albert Leonetti
David Carney
Cindie Carroll-Pankhurst
Helmuth F. Cascorbi
Juliet Castrovinci
Cedars Legacy Fund
Chapman-Sung Giving Fund
Katherine Chapman
Elizabeth Dreben & Hillel Chiel
Mr. & Mrs. Lee A. Chilcote Jr.
Homer Chisholm and Gertrude Kalnow
Chisholm Fund
Ann & Tom Cicarella
Gale Clarry
Kay & Daniel Cohen
Annie Collins-Mathews
Gwen & Tron Compton-Engle
Erin & Daniel Connell
Martha A. Connell
Wiley Cornell & Rich Marschner
Lisa Gelles & Jay Constantini
Dana Crawford & Steven Hall
Mr. & Mrs. Michael A. Cristal
Gayle & Daniel Cronin



Justin Croniser
 Jean A. Cross
 Christine & James Cullen
 Ben Crawford & Charity D'Amato-Crawford
 Peter W. & Susan G. Danford
 Thomas & Elinor Danford
 Jill & John Davies
 Barbara Claas & Jeffrey Dean
 Laura & Chris Dean
 Albert DeGulis
 Gregory J. DeGulis and Nada Hashem
 Ruth J. Skuly & Leo A. Deininger
 Susan Delaney
 Randeep Dhiman & Adam Kollin
 Richard & Nancy Dietrich
 Leslie & Michael Dingeldein
 Sarah & Pawan Divakarla
 The Dixon Family
 Caroline Marie Dobrowski Schulte
 Susannah Doman
 Thomas Joseph Doyle II & Julie Perkins
 Kerri Anne Dray
 Cassie & Jeff Drescher
 Linda & Michael Dudzinsky
 Stephen & Liz Duffett
 Christopher & Courtney DuPaul
 James Graham & David Dusek
 Kathryn Duvall
 Mr. & Mrs. Robert P. Duvin
 Kimberly H. & John J. Dyer
 John & Sybil Eakin
 Traci & John Egan
 Chris Eiben
 Marian L. Eichar*
 Marilyn & Mark Eisele
 Nan Eisenberg
 Grant P. Emerick
 Lin Emmons
 Wendy & Frank Esposito
 The Estate of Bettie Joyce Baker
 Amy Eugene
 Eileen & Stephen Ewen
 The Andrew and Leigh Fabens Charitable Fund
 Corinna & Yngve Falck-Ytter
 Tina & Jeff Fast
 Ashley & Michael Faulx
 Olaoluwa & Theodora Fayanju
 Mrs. Carolyn Fazio
 William E. Fehrenbach Jr.
 Erin Benay & Matthew Feinberg
 Feldman Weatherhead Charitable Fund
 Patricia L. Ferrara
 Gregory & Christina Ferreri
 Fidelity Charitable
 Cindy Fink & Kemp Jaycox
 Florence & J. Donald Fitzgerald
 Caitlin FitzGordon
 Chris Flammang

ForJesusLovedMeFirst
 Mariellen H. Frank
 Margaret & Jonathan Frankel
 Freedman Munetz Charitable Fund
 Carolyn C. Freer
 Tammy & Rick Freer
 Barbara & Roger French
 Dr. & Mrs. Avrum Froimson
 Dr. & Mrs. Daniel G. Fuller
 Fulton Family Fund
 Megan Fulton
 Dr. & Mrs. Christopher Furey
 William M. Ganger
 Lisa Gannon
 Derek & Mary Garceau
 Stephen H. Gariepy
 Scott & Ann Garson Donor Advised Fund
 of the Jewish Federation of Cleveland
 Peter & Emily Geier
 Rachel & Gratton Giesey
 Amy Gilbert
 Drs. Beth & Rob Gillespie
 Anne and Walter Ginn Fund
 Barbara Ginn
 Anne & Walter Ginn
 David W. Glasser
 Jacob & Alissa Glenn
 Jeri R. Glick
 George N. Glosik
 Brett Glotzbecker
 Michael Glotzbecker
 Carol Z. Gobel
 Richard Goddard & Anne Unverzagt
 David J. Goldberg
 Meaghan Combs & Neal Evan Goldenberg
 Matt Goldman & Ann Pearson
 Tiffany & Joshua Goldstein
 Murray A. Goldstone
 Jeanne & Steve Gordon
 Jonatha Gott & Eric Christian
 Robert J. Graham & Nancy Neuer
 Richard & Barbara Gray
 Andrew L. & Judy Green
 Brian Green
 Ginette & André Gremillet
 Sally & Robert D. Gries
 Harriet & David Griesinger
 Peter & Joanne Griesinger
 Beatrice & Burt W. Griffin
 Michael Dean Griffith & Donna Prots
 Jim B. Griswold
 Charles Rosenblatt & Deborah Gross
 Harley & Rochelle Gross
 Chas & Jen Grossman
 Lindy Grossman
 Lynn & William Gruber
 Mr. & Mrs. R.N. Gudbranson
 Anandhi & Hal Gunder

Mr. & Mrs. Ben B. Gunter, Jr.
 Sara Guren
 Dr. Judith Haas & Mr. Douglas Haas
 Rachel Hackenberg
 Tom & Kirsten Hagesfeld
 Steven M. Hale
 Christopher and Michelle Hall
 David C. Halley
 Nancy Y. Hammond
 Hanes Family Foundation at The Cleveland Foundation
 Judith P. & Michael J. Hannon
 Erica & John Harrington
 Melody Hart & Gary Benjamin
 Brian & Krystyna Harte
 Constance Hartley
 Samuel & Kimberly Hartwell Charitable Fund
 Holly Selvaggi & Clark Harvey
 Susan Murray & Donald Harvey
 Tara Hata
 Jonathan and Karry Hatch Family Fund
 at the Cleveland Foundation
 Kathleen Hayes
 Kathleen Hayes Giving Fund
 Lorraine & Scott Hazan
 Kerianne & Graham Hearn
 Michelle Hecker & Curtis Donskey & Family
 Kathleen A. & Thomas A. Heffernan
 Alfred D. Heggie, MD
 Kathryn Heidemann & Jonathan Golli
 Geoffrey Michael Heller Memorial Fund
 Beth Hellerstein & Daniel Jaffe
 Kathryn Hemsath
 L.J. Hendrix, Jr.
 Katharine Downes & Walter Henricks
 Scott D. Henry
 Alexander & Traci Herbruck
 Ann T. Herbruck
 David & Dozie Herbruck
 Gretchen S. Herbruck
 Eric & Karen Herman
 Paul Herrgesell
 John F. & Mary Herrick
 John & Laura Herrick
 Karl W. and Betty M. Hess
 Robert Heyka
 Melissa Higgins-Linder
 Nance Hikes & Michael Melampy
 Thomas & Anne Hilbert
 Thomas & Elizabeth Hill
 Annette & Brett Himes
 Alexander Ross Himmelsteib
 Melissa Hintz and James Trapp Fund
 Melissa J. Hintz & James M. Trapp
 Donald Hirsch
 Edith F. Hirsch Philanthropic Fund of the Jewish
 Federation of Cleveland
 Elizabeth Hiser
 Hochberg/Singer Giving Account

Tiffany Hodges
 Sharon & Scott Holbrook
 Laura K. Hong & Tom Kovach
 Don Horn & Joachim Voss
 Thomas & Bridget Hornberger
 John E. & Paula Horner
 J. Robert & Priscilla C. Horst
 Richard A. Horton
 Michael J. Horvitz 2 Donor Advised Fund of the Jewish
 Federation of Cleveland
 Dr. & Mrs. Lansing Hoskins
 Catherine & Brian Hunnicutt
 Caitlin Hunter
 Meg & Jed Hunter
 Peter B. Imrey Charitable Fund
 James & Gale Jacobsohn
 Karen & Marc Jaffe
 Paul & Christine Janicki
 Susan & Stanley Jaros
 Anne Jarrad
 Carl M. Jenks
 Helen B. & Erik M. Jensen
 Devi Jhaveri
 Linda B. & Robert A. Johnson
 Christopher K. & Amanda Jones
 Linda Johnson & Mark Jones
 Helen Jones-Toms & Howard Agriesti
 Thomas A. Jorgensen & Jocelyn Ruf
 Megan Kacvinsky
 Emilie Kadish
 Jeffrey Kadlic
 Fran Falcone Kalafatis
 SR. Bernadette Kamin
 Marilyn & Howard Karfeld
 Megan Lynn Karges
 Nancy & Bernard Karr
 Carole J. Kass
 Maribeth & Donald J. Katt
 Jeff Katz & Judith Malone
 Karen & Doug Katz
 Laura & David Kaufman
 Kazdan & Gooch Philanthropic Fund
 Kay Martin & Dennis Keating
 Chris, Christina, Olivia, and Graham Keller
 Marty & Dennis M. Kelly
 Lawrence & Joylen Kent
 Susan Kent & Benjamin Sperry
 Mary Ann & Douglas Kerr
 Karen Kidwell & Henry Billingsley
 Joon-Li Kim and Robert Gudbranson Donor Advised Fund
 Charles H. King & Catherine E. Keating
 Dr. Michael J. King
 Mireille & Dave Kious
 Barbara Klante & Gary Hanson
 Nina Klein, M.D.
 Cynthia & Paul Klug
 Mark & Susan Knight
 Karen H. Knittel

S. Lee Kohrman
 Robert & Sarah Kolansky
 Joan & Paul Kolb
 Robert & Divina Koonce
 Ursula Korneitchouk
 Terry Kovel
 Stephen D. Kresnye
 Scott Krupkin & Mary Zenisek
 Jennifer Kubic
 Mr. & Mrs. S. Ernest Kulp, III
 Michael F. Kupiec
 Stephen Kushnick
 Alexander & Maressa Kuszewski
 William B. La Place
 Mr. & Mrs. Arthur J. Lafave, Jr.
 Jason Lambrese & Andrew Clifford
 Lynn T. Landmesser
 Janet Lane
 Carol Laursen & Eric Cobb
 Ann & David Lavelle
 John & Kristin Lavelle
 Nancy & Neal Lavelle
 William Lawrence
 Robert P. and Kathleen W. Lawry
 Sharmon Sollitto & Michael Lederman
 Leibert-Karson Charitable Fund
 Thomas & Kathleen Leiden
 Earl and Ellen Leiken Charitable Fund
 Debra S. Leizman
 Morton Q. & Judith W. Levin Philanthropic Fund
 of the Jewish Federation of Cleveland
 Nancy Levin
 Catherine & Robert Levy
 Cathy L. Lewis
 Doris & Joel Lieber
 Amanda Marie Lincoln
 Barbara A. Lincoln
 Cathy Anne Lincoln
 Kathy Toderick & Paul S. Lincoln
 Bonnie & Lawrence V. Lindberg
 Rachel & Luke Lindberg
 Christine Link
 Bill & Peggy Lipscomb
 Dan Litt
 Rosalie M. Litt
 Heather Long
 Dr. & Mrs. Thomas E. Love
 Carol & Gilbert Lowenthal
 Nicole & John Lozier
 Mrs. Emily Lucas & Dr. Armand Lucas
 Mary & Thomas Lucchesi
 Tracie & Charlie Luther
 Chuck & Mary Susan Lyon
 Andrea & Michael Lyons
 Joseph MacDonald
 Elizabeth P. MacIntyre & Joseph Sopko
 Craig & Carla Macklin
 Linda Macklin

Amy Samuel MacLean
 Jeremie & Christina Maehr
 Joey Mallin & Laura Englehart
 Meredith & Joseph Manning
 James & Susan Marder
 Mary Neagoy & Ed Markey
 Eugene Marks
 Rebecca Pelfrey & Aaron Marks
 Tracey & Joseph Marks
 Nancy Van Aken Marti
 Lauren & Jeff Martin
 Mary Anne Martin
 Ashish Masih & Robert Pintabona
 Tami Masuoka
 Victoria & Wesley Mateo
 Joe & Eleni Matts
 Lynda & Charlie Mayer
 Jean McArthur
 Judge & Mrs. Robert C. McClelland
 Christopher C. & Gaylee J. McCracken
 Rick & Craig McDonald
 David S. McDowell
 Joanne McKell
 Carol F. & Walter T. McKelvey
 Laura & Chris McKenna
 Marilyn & Thomas C. McLaughlin
 Mr. & Mrs. Sterling McMillan, III
 Toddy & Jim McMonagle Giving Fund
 Megan & Michael McNamara
 Patrick & Mary McQuinn
 Medalie Family Fund
 Christine Medvedev
 Barbara C. Megery
 Guy V. & Katy Mercer
 Trent M. and Irene I. Meyerhoefer
 Abraham & Barbara Miller
 Mr. & Mrs. Gregory M. Miller
 Anne & Patrick Mitchell
 Dave Shelton & Anna Mitchell
 Sheryl & Charles Modlin
 Malou Monago
 Mr. Thomas C. Montello
 Marge & Dan Moore
 Nancy R. Moore
 Michael & Petra Moran
 Lynda Britton & Sherrod Morehead
 Joe & Sheri Morford
 Jay Morgan
 William R. & Barbara W. Morgan
 Mario & Dana Morino
 The John and Sally Morley Charitable Fund
 Thomas Morley
 Jane A. Morris
 Marjorie & Bert Moyer
 John T. & Mary M. Mulligan
 William C. Mulligan Charitable Gift Fund
 Murlan J. Murphy, Jr. & Molly Dixon
 Paul & Frances Murphy

Kate Fox & Dr. Sean Nagel
 Kelly & Peter Nagusky
 Joseph J. & Barbara H. Nahra
 Robert W. Namy
 Randi Nathenson
 Janet E. Neary
 Spencer Neth
 Evelyn B. Newell
 John & Elizabeth Newman
 Amy Nieman
 The Gay & Lesbian Fund of the Hermes Foundation
 New World Somewhere Fund at The Chicago
 Community Foundation
 Kassie Novak
 Jay & Meg Nystrom
 Carolyn Charles & Dick Obermanns
 Al Oberst
 Robert & Gail O'Brien
 Ms. Keely O'Bryan & Mr. David Landever
 Shannon O'Connor
 Sarah Ott-Hansen
 Kelsey O'Hearn
 Mr. & Mrs. Paul T. Omelsky
 Lauren & Sue Pacini
 PACS DAF
 Andrew & Amy Paine
 Katherine Panzica
 Richard & Jude Parke
 Ferole Parmelee
 Kim & John Pastrick
 Bella & Ketan Patel
 Cheryle Paxos
 Barbara Peskin
 Catey & Patrick Peters
 Erin & William Peters
 Katherine & Kenneth Petrey
 Roland S. Philip
 Loretta & Daniel Pierce
 The Lotte Schreiber Pinkus Memorial Philanthropic
 Fund of the Jewish Federation
 William T. Plesec & Susan M. Stechschulte
 Gloria Plevin
 Martha Brandt & Jeff Pollock
 Dorothea & Michael Polster
 Terri Pontremoli
 David Porter & Margaret Poutasse
 Kathy & Michael Porter
 James J. Posch, II & Joyce Braverman
 Jeffrey Potter & Ingrid Tolentino
 Rebecca & Patrick Price
 Margot & Norman Prokop
 Diana Ramirez & Aaron Proweller
 Jacque & Sean Prude
 Michael McIntyre Prunty & M Lee Maxwell
 Lucy & Chuck Weller
 Elizabeth Quinn
 Joseph & Amy Murray Quinn
 Michael Lyford & Sonja Rajki

Meredyth & Jon Ralph
 The Clara T. Rankin Charitable Fund
 Sridhar & Sarojini Rao
 Helen L Rapp
 Ginger & Lamar C. Ratcliffe, Jr.
 Abhi & Libby Ray
 Barry Reis
 Mr. & Mrs. Richard T. Reminger
 Neal R. Restivo
 Melissa Richmond & William Watterson
 Cristina & Jack Rickard
 Shawn Riley
 Allyson Robichaud
 Blythe C. & Richard V. Robinson
 Megan Rochford
 Elizabeth & Tres Roeder
 Kenneth & Amy Rogat
 Marya & Todd Rogers
 Drs. Michael F. & Nancy J. Roizen
 Kathy & Michael Romeo
 Robert & Margo Roth Family Philanthropic Fund
 of the Jewish Federation of Cleveland
 Mia Ruffing
 Kathleen Rydar
 Alike & Peter Rzepka
 Mary Jo & Robert Salata
 Steve & Anne Sanford
 Mari Sato & Daniel Lockwood
 Robin & Andy Schachat
 Nancy & Jim Schade
 Schattinger Family
 Norm Schmidt
 Kirk L. Schmink
 Elizabeth & Thomas Schorgl
 Nancy & Terry Schreiner
 Mr. & Mrs. John D. Schubert
 William & Dallas Schubert
 Kara Schwabauer
 Virginia Weiss & Stephen Sedam
 J. Gary Seewald
 Martha & Thomas Seger
 Astri Seidenfeld
 J. Eva Selfridge
 Warren Selman & Jennifer Jochum
 Sersig-Brandt Family Fund
 Karen Thompson-Shaheen & Brett Shaheen
 Garyn & Christine Sheets
 Carrie & Scott Shelfer
 Shelfer Family Charitable Fund
 Scott Shelfer
 Marianne & John Sheridan
 Alice S. Sherman
 The Shockey Foundation
 Joanne Siegel
 Dr. Raj Sindwani & Sangeeta Prakash
 Sanjay Singh & Erin Holston Singh
 Vikram Singhal
 Kelly Skeat

Dr. Brian & Dr. Ann Skerry
 Brian Hill & Melissa Skilken
 Michael & Emily Slopnick
 Kathy Smachlo & David Kaplan
 Deborah A. Smith
 Judson E. & Anita Smith
 Kempton Smith and Nancy King Smith
 Donor-Advised Fund
 Stanford Smith
 Katherine Solender & William Katzin
 Glenn & Patricia Solomon
 Ms. Susan M. Soltis
 Peggy Spaeth
 Joan Spoerl & Ken Sakaie
 Joel Sprayregen
 Ben & Heather Stefanski
 Charles & Jean Stephenson
 Jon Straffon
 Peter A. & Cindy Straffon
 Alice & Albert Stratton
 Penny & David Strauss
 Katherine Stricker
 Betsy & Fred Stueber
 Patricia Substelnny
 Karen & Peter Sullivan
 Annette & Mark Sutherland
 Courtney Smalley & Christopher Sutter
 Constance & Mark Swary
 Melanie & Jim Sweeney
 Suzanne & Tyler Taigen
 Robert J. Takacs & Anne M. Regier
 David R. Tantlinger
 Magdalena Tary-Lehmann
 Cynthia A. Taylor
 Patti Taylor
 Tendulkar Family Fund
 Emily Zabor & Rick Thayer
 Christopher G. Thomarios & Helena Oroz
 Lynda Herman Thomas
 George & Janice Thompson
 William H. & Siobhan Thompson
 Martha Schinagle & Kimberly Thompson-Schinagle
 C. Elizabeth Threfts
 Jane R. Tidwell
 Kristen Tilak
 Peter & Shannon Titas
 Margot Tomer
 Martha & Edward Towns
 Jesse Traschen
 Drs. Ronald & Denise Triolo
 Barbara Truitt
 Karen & Robert Tucker
 Nicky Turco
 Betty Turpin & John Cunningham
 Zoe Tyler
 Don & Jane Underwood
 Unitarian Universalist Congregation of Cleveland
 Dominic & Courtney Valentino

Greg & Monica Van Niel
 J. Paxton Van Sweringen*
 Ernest Eugene Vargo, Jr.
 Amy & Anthony Vegh
 Victoria Antoinette Vermes
 Kenneth J. Vinciquerra
 Robert & Jennifer Voelker
 Elizabeth Emery & Evan Wachs
 Dr. Terri Wade-Lyles
 Abby Wald
 Walnut Ridge Give for Good Fund
 John & Jeanette Walton
 Mr. & Mrs. James L. Wamsley, III
 Holly & Doug Wang
 Betsy Warner
 Michael & Sharlene Warner
 Ted Warren & Sandy Bellin
 Wendy & Jay Wasman
 Christine Jellis & Dan Waters
 Donald Watkins
 Steve & Caryn Wechsler
 Steven & Natalie Weigand
 Heather & Michael Weingart
 David E. Weiss Charitable Fund
 Ann Jane Weiss
 Mayor David E. Weiss
 Elizabeth & Larry Weiss Donor Advised Fund
 of the Jewish Federation of Cleveland
 Amy Goodman Weller & Robert Jason Weller
 Frank Licata & Michelle Wesley
 Julie A. West
 Cooper & Debbie White
 Julia Whiteside
 Mr. & Mrs. Dickson L. Whitney, Jr.
 Amy Laughlin Wiedemer & John Wiedemer
 Maren Wilbur
 Mr. & Mrs. Dennis Wilcox
 Diane D. Wilcox
 Carmella Williams
 Christine Williams & Marie Frisof
 Julia Williams
 Sophie Williamson
 Brigid Wilson
 David Lynn Wilson
 Christine Winsberg
 Albert Hans Woehrle, Jr.
 Nancy Wolf
 The Wolpert Fund at The Cleveland Foundation
 Christopher J. Wozniak & Susan Strauss
 Linda & Bob Yanega
 Dudley D. Yost
 Youngs Family Charitable Gift Trust
 Janet & Bill Younker and Family
 Tania Younkin
 Andrea R. Zacher
 John Zaluski
 Zambie Family Fund
 Connie Zlot

Patrick M. Zohn
 David Zordan & Janet McGrath
 Mr. & Mrs. Kalman Zucker & Family

IN KIND

April & Adam Bain
 Elizabeth & Christopher Bart
 John & Kristen Bartels
 Kate & Rick Blaszk
 Meredith Camp Events, LLC
 Harry & Mary Ann Carlson
 Kathryn A. Carlson & Richard G. Albaugh
 Marcie & Matthew Carrier
 Cleveland Cavaliers
 The Dancing Sheep
 Laura & Chris Dean
 Susan Delaney
 Kathryn Duvall
 Eastwood Furniture
 Eileen & Stephen Ewen
 Sarah Ezzie Haines
 Foxy a Salon
 Drs. Beth & Rob Gillespie
 Frank Kups
 Ladder
 Lake County Captains
 Catherine & Robert Levy
 Neema & Ryan Mayhugh
 Michael & Petra Moran
 Laura & Robert Muller
 Kassie Novak
 J Pistone One World Market & Cafe
 Jeffrey Potter & Ingrid Tolentino
 Jacque & Sean Prude
 Meredyth & Jon Ralph
 Abhi & Libby Ray
 Jennifer V. Sammon
 William Scheele
 John R. Scott
 Shaker Heights Country Club
 Brooke Slater
 SLFMKR
 Lee & Caroline Weingart
 Western Reserve Area on Aging
 White Cloud Studio
 Sophie Williamson
 Wolf Investors LLC

*September 1, 2020 – August 31, 2021

Capital Campaign Donors*

\$250,000 – \$499,999

The Cleveland Foundation
 David H. & Barbara M. Jacobs Foundation
 The Kohl Fund
 Donna & James Reid
 The Rose Foundation

\$100,000 – \$249,999

Anonymous
 Peter & Rita Carfagna
 Harry & Mary Ann Carlson
 Anne T. & Thomas C. Hilbert
 Nancy & Neal Lavelle
 Barbara Lincoln
 Cathy Lincoln
 John C. Morley
 John T. Mulligan, Thomas H. Mulligan
 & William C. Mulligan
 The Murch Foundation
 Heather & Tim Ryan
 Sally & John Schulze
 The Kelvin & Eleanor Smith Foundation
 Jack & Alexa Sulak
 Third Federal Foundation

\$50,000 – \$99,999

Anonymous (3)
 Abington Foundation
 John Barber
 Cynthia Bassett
 Kathleen & Thomas Heffernan
 David & Ann Lavelle
 Tom & Kathy Leiden
 Paul Lincoln & Kathy Toderick
 Michael & Courtney Novak
 Leon & Gloria Plevin
 SLRNC Endowment Foundation

\$25,000 – \$49,999

Chace & Josie Anderson
 Ruth Anna Carlson
 Mary & Tom Gannon
 The George Garretson Wade Charitable Trust #2
 Albert A. Hanes & Robert E. Hanes
 Sam & Kim Hartwell
 Graham & Kerianne Hearn
 Ann T. Herbruck
 Higley Fund of The Cleveland Foundation
 Meg & Jed Hunter
 Louise H. & David S. Ingalls Foundation
 Kempton & Nancy King Smith
 Cynthia & Paul Klug & Family
 Lakeside Foundation
 Sarah Lavelle
 John & Kitty Makley
 Elizabeth Ring Mather & William Gwinn Mather Fund

Lynda & Charlie Mayer
Ray & Katie Murphy
Charles L. Pack Charitable Trust
PNC Foundation
The Schuele Family Charitable Fund
Julie West

\$10,000 – \$24,999

Anonymous (6)
Alexis Abramson & Chris Sklarin
The Blaszak Family
Mary Cahen
Leigh H. Carter
Kay Carlson & Rick Albaugh
Ann & Tom Cicarella
The George W. Codrington Charitable Foundation
Martha Connell
Erin & Dan Connell
Paul & Natalie Cooper
DeGulis Family
The Dixon Family
Henry C. Doll
Geoff, Bill & Mary Dunbar
John Dyer & Kimberly Humphreys Dyer
Mity & Jef Fowler
Eric & Jana Friess
Claudia & Dave Fulton
Beth & Rob Gillespie
Anne & Walter Ginn
Matt Goldman & Ann Pearson
Laura Gooch & David Kazdan
Jeanne & Steve Gordon
James D. Graham & David M. Dusek
Barbara Baetz-Greenwalt MD & Peter H. Greenwalt MD
Tom & Kirsten Hagesfeld
The Hershey Foundation
Mrs. Roland S. Hill
Helen B. & Erik M. Jensen
Anne C. Juster
The Kadlic Family
The Kass Family
Laura & David Kaufman
Nancy F. & Joseph P. Keithley Foundation
Susan Kent & Ben Sperry
Karen Kidwell & Henry Billingsley
John & Kristin Lavelle
Toby D. Lewis
William S. and Margaret F. Lipscomb
The Milton and Tamar Maltz Family Foundation
Patricia & Charles Mintz
Joe & Sheri Morford
Barb & Bill Morgan
Nature Nurture Balance Fund of The Cleveland
Foundation
Jon & Robin Outcalt
The Parker Hannifin Foundation
Dick & Pat Pogue
Paula & David Reape
Jim & Anne Schoff

Martha & Dave Schubert
Sears-Swetland Family Foundation
Carrie & Scott Shelfer
Kate & Brit Stenson
Thompson Family Foundation
Susan Wolpert & Raymond Lesser

\$5,000 – \$9,999

AHS Foundation
Marnee & Brendan Anderson
Jim & Gail Arnold
The Orr Family
Harley & Diane Cahen
The Callahan Foundation
Jeanne Collieran & Richard Weaver
Mr. & Mrs. Michael A. Cristal
Laura & Chris Dean
Garden Club of Cleveland
Andrew L. & Judy Green
Sally & Robert D. Gries
Beatrice & Burt W. Griffin
Christopher & Michelle Hall
Sandy & Harry Holmes
Mary Alice Horner
Laura & David Kaufman
Carolyn & David Lincoln
Michael & Petra Moran
Kate Fox & Dr. Sean Nagel
Denise & Doug Neary
Janet E. Neary
Blythe C. & Richard V. Robinson
Tom & Nancy Seitz
Shaker Lakes Garden Club
Betsy & Fred Stueber
Harris Taylor
Heather & Charles Thiltgen
Kazdan & Gooch Philanthropic Fund
Walnut Ridge Give for Good Fund
Western Reserve Land Conservancy
Tania Younkin
Mary Martha Zerbi

\$2,500 – \$4,999

Andrew Bruml
Christina & Jim Carlson
Mary Jo Ciuni
Corning Incorporated Foundation
Justin Croniser
Ruth J. Skuly & Leo A. Deininger
Mr. & Mrs. Andrew Fabens
Cindy Fink & Kemp Jaycox
Scott & Ann Garson
Paul Kangas
Stephen & Andreea Kresnye
Anonymous
Nancy & Jonathan Polster
Meredyth & Jon Ralph
Roseanne Silva & Michael Tonkin
Lisa Vigil Schattinger & Doug Schattinger

Barbara & Terry Shockey
Rob Sikora
Sanjay Singh & Erin Holston Singh
Deborah A. Smith
Uvas Foundation
Catherine & Dale Veres
Mr. & Mrs. James L. Wamsley, III
Christine Jellis & Dan Waters
Michael Weil
Nancy H. Zambie

\$1,000 – \$2,499

Geoffrey K. & Maryann D. Barnes
Carolyn & Douglas N. Barr
Sherri Barr
Marjorie & James Bashaw
Kelly & Chris Beiswenger
Marc Benson & Sheila Reingold
Richard J. Blum
Beth Brandt Sersig & Christopher Brandt
Gail Broughton
Steven Nissen & Linda Butler
Alyson & Michael Carfagna
Phillip & Linda Catanzaro
Pam T. Conover
The Conway Family Foundation
Charles & Lucy Cooley
Thomas & Elinor Danford
Linda Day
Albert DeGulis
Gregory J. DeGulis & Nada Hashem
Meg DeGulis
Jan & Michael Devereaux
Sarah & Pawan Divakarla
Mr. & Mrs. Robert P. Duvion
Steven Feldman & Mary Weatherhead
Patricia L. Ferrara
Buffy & Mark Filippell
Tamara & Steve Fink
Florence & J. Donald Fitzgerald
Derek & Mary Garceau
Joanne M. Gillis
Mr. & Mrs. R.N. Gudbranson
Maia A. Hansen
Michelle Hecker & Curtis Donskey
Matthew & Allison Heffernan
Frances Heller
Melissa J. Hintz & James M. Trapp
Edith Hirsch
Thomas & Bridget Hornberger
Richard & Pam Hricik
Hope Hungerford
Anonymous
Maxine Jacqumin
Thomas A. Jorgensen & Jocelyn Ruf
Nanette Webb & Varun Kalra
Karen & Doug Katz
KeyBank
Ursula Korneitchouk

Stephen Kushnick
Jennifer & Eddie Lehner
Amanda Marie Lincoln
Chuck & Mary Susan Lyon
Craig & Carla Macklin
Meredith & Joseph Manning
Randall E. Marcus
Matthew McGinty
Cecil R. Mellin
Trent M. & Irene I. Meyerhoefer
Bonnie & Sanford Miller
Julia Mitchell
Marjorie & Bert Moyer
Paul Murphy
The Thomas Piraino & Barbara McWilliams Family
Foundation
Nordson Corporation Foundation
Katherine T. & William J. O'Neill, Jr.
Pat Pastore
Kim M. Pesses
Jeffrey Potter & Ingrid Tolentino
Julie & Peter Raskind
Joyce Z. Robinson
Seth Robinson
Laurie & Robert Ronis
Robin & Andy Schachat
Thomas J. & Patricia L. Schinabeck
Mr. & Mrs. John D. Schubert
Alice S. Sherman
Laurie & Richard Silver
Kate Spielman
Jeffrey & Heidi Strean
Robert J. Takacs & Anne M. Regier
Cynthia A. Taylor
Lynda Herman Thomas
Linda Tobin & Stephen Pepper
United Way of Greater Cleveland
Dr. Terri Wade-Lyles
Molly & Daniel Walsh
Harriet Warm
Margaret W. Wong
Christopher J. Wozniak & Susan Strauss
Judy & David Young

\$500 – \$999

Catherine L. Albers
Diana Petrauskas & Amie Albert
Penelope Allen
Mark Anderson & Fey Parrill
Tim & Susan Armstrong
Lin & Chris Bartel
Annette & E. Douglas Beach
Nathan & Sosamma Berger
Kim Bihler
Jeanette Brown
Taelor & Taylor Brown
Eileen M. Burkhart & Co, LLC
Raja Byrnside & Greg King
Meredith Camp

Wil Catlin
 Byron DaSilva
 Ralph & Kathy Dise
 Nan Eisenberg
 Ashley & Michael Faulx
 Dr. & Mrs. Daniel G. Fuller
 Carol Z. Gobel
 Anne Unverzagt & Richard Goddard
 Timothy Unverzagt Goddard
 Erin Grimm & Charles Van Winkle
 Andrew & Lois Gross
 Zachary Guren
 David Hagen
 Judith & Russell Hall
 Gretchen Hallerberg & Walt Tomford
 Melody Hart & Gary Benjamin
 David & Dozie Herbruck
 Ellen & Mark Hoffman
 John E. & Paula Horner
 Joan & Russell Horwich
 Bruce & Donna Jackson
 Linda B. & Robert A. Johnson
 Ruth Kanner
 Kurt & Mary Beth Karakul
 Nancy & Bernard Karr
 Nina Klein, M.D.
 Jason Lambrese & Andrew Clifford
 Nana W. Landgraf
 John A. Leibert & Sylvia Karson
 Carol & Gilbert Lowenthal
 Elizabeth P. MacIntyre & Joseph Sopko
 Linda Macklin
 Roger Mayer & Sally Cantor
 Neema & Ryan Mayhugh
 Christopher C. & Gaylee J. McCracken
 Marge & Dan Moore
 Joseph J. & Barbara H. Nahra
 Robert W. Namy
 Ohio Native Plant Society
 Lauren & Sue Pacini
 Julie & Patrick Pastore
 Carlye & Kyle Pearce
 Catey & Patrick Peters
 Jane Peterson & Phil Star
 Laura Peterson
 Joyce Pope
 Gary Price
 Phoebe Prioleau
 Mrs. Clara T. Rankin
 Judy & Pete Richards
 Cristina & Jack Rickard
 Joanne Westin & Roy Ritzmann
 Dell & Lou Salza
 Susanne Sande
 Anonymous
 Helen Schreiber
 Warren Selman & Jennifer Jochum
 Joanne Siegel & Walter Thiem

Kathy Smachlo & David Kaplan
 Laurel & Sean Stack
 Peter A. & Cindy Straffon
 Mary Supler
 Annette & Mark Sutherland
 Judith & David Tanenbaum
 Mary F. Twomey & Nancy Thrums
 Sabrina & Peter Vanden Broeck
 Amy & Anthony Vegg
 Holly & Doug Wang
 Mr. & Mrs. Gregory A. Watts
 Cooper & Debbie White
 Melissa Kay Wilson
 Patrick M. Zohn

\$250 - \$499

Bruce H. Akers Fund
 Patty Albrecht
 Nicholas & Theresa Ann Avila-John
 Mr. & Mrs. William G. Batcheller
 Bette Bonder & Patrick Bray
 Mitchell Borrow
 Mary & John J. Boyle, III
 The Camlic Family
 Charles Collier
 Andrew D'Atri
 Jennifer & Pete DeVine
 Christina DeVoss
 Michael G. Eakin
 Melissa & Todd Federman
 Amanda M. Fort
 Debra & Gary Franke
 Darcy Freedman
 Carolyn C. Freer
 David J. Goldberg
 Jessica Goldstein
 Barbara H. Gordon
 Peter & Joanne Griesinger
 Cynthia W. Halle
 Rosa Hand
 Michael L. Hardy
 Karl W. & Betty M. Hess
 Robert Heyka
 Sharon & Scott Holbrook
 J. Robert & Priscilla C. Horst
 Karen & Marc Jaffe
 Fran Falcone Kalafatis
 Mary Kelsey & John Kaminsky
 Kenneth Lawrence Kowalski
 Mark & Jean Koznarek
 Jennifer Kubic
 Marcia W. Levine
 Bonnie & Lawrence V. Lindberg
 Lyndhurst Garden Club
 Christian & Vanessa Maier
 Denton Mease
 Carol & Dick Michel
 Shana Miskovsky
 Amy & Marc Morgenstern

Elizabeth S. Morris
 Carl & Lu Anne Morrison
 Lois Freedman & Mark Munetz
 Carolyn Charles & Dick Obermanns
 Barbara Peskin
 Ilana & Chuck Horowitz Ratner
 Kip & Sarah Reader
 Geraldo & Erica Rivera
 Todd C. Robinson
 Helen & Louis Rorimer
 Toni & Don Scherzer
 John F. Shelley
 Martha & Edward Towns
 Sol Varon
 F. Carl Walter
 Alesha Washington
 Stephen J. Wilson & Lia S. Logio

\$100 - \$249

Hinda & Howard Abramoff
 Louise Abrams & Robert Fuerst
 Nancy A. Adams
 Rick Albaugh
 Brian L. Larson & Laurie Albright
 Molly & Shannon Anderson
 Cathy & Bill Annable
 Todd & Norma Atkinson
 Shirley & Nick Baldwin
 Elizabeth & Christopher Bart
 David Beach & Constance Magoulas
 Leslie Meriam Bell
 David & Eleanor Bergholz
 Jennifer & Michael Bier
 Dr. & Mrs. Thomas E. Bier
 John & Susan M. Blackwell
 Gerald J. Blake & Susan Kaeser
 Ann Boughner & C.C. Liu
 Amy & Andrew Bouthilet
 David G. Bovington
 Joan Trey & Daniel Brustein
 John F. Burke, Jr. & Nancy A. Fuerst
 Jane C. Busch
 Kathryn Canada
 William E. & Annette M. Cappaert
 Carmen's Custom Window Treatments
 Leslie C. & Michael B. Carr
 Ann Catlin
 Norman A. Clemens
 Catherine Connell
 Ben Crawford & Charity D'Amato-Crawford
 Mary Ann Davis
 Charan M. Devereaux
 Leslie & Michael Dingeldein
 William Doty
 Robert C. Downey
 Stephanie & William Eisele
 Jane M. Ellison
 Amy Eugene
 Vanessa Evans & Harold Zion

Margaret Farrar
 Tina and Jeff Fast
 Erin Benay & Matthew Feinberg
 Rachel & Steve Feinleib
 Loretta Feller
 Richard & Donna Ferris
 Claudio & Midori Focchi
 Chelton C. Flanagan
 P. Jeffery Ford
 Marcia Fox
 Betty & John Franklin
 Kelly & Douglas Freer
 Stephen H. Garipey
 Susan Gavazzi
 Pamela George-Merrill
 Caroline & Aaron Gerds
 Nina Gibans
 Jane Glaubinger
 Brian S. Gleisser
 Murray A. Goldstone
 Jonatha Gott & Eric Christian
 Brenda Gray & David Lemanowicz
 Anonymous
 Walter Duvall & David Gregory
 Andrea Grodin
 Robin & David Gunning
 Nancy Y. Hammond
 Hadley Wood & Jeff Hardacre
 Penny Braudy Harris
 Betty Ann Helms
 Gretchen S. Herbruck
 Andrew Hertz
 Annette & Brett Himes
 Debra & Jason Hollander
 Richard A. Horton
 Mr. & Mrs. Michael J. Horvitz
 David Hunt
 James & Gale Jacobsohn
 Johnson & Johnson
 Emilie Kadish
 SR. Bernadette Kamin
 Maribeth & Donald J. Katt
 Matthew Katz
 Rob Kelly & Judi Herbert
 Melissa & Jeffrey Klein
 Sarah & Michael F. Knoblauch
 Yvonne Kolibash
 Sally & Howard Kramer
 Dorothy K. & Donald G. Kuhn
 Mr. & Mrs. S. Ernest Kulp, III
 Michelle Kunz & Charles Steffel
 Catherine & Kevin LaCroix
 Gretchen Larson
 Wilbur & Diane Leatherberry
 Robert E. Lemmers
 Doris & Joel Lieber
 Debra Light & Bruce Sherman
 Nicole & John Lozier

Betsey Luce
 Saralee & Randall D. Luke
 Annora C. Marcus
 Judith & Ronald Marec
 Andrew L. Margolius
 Mary Neagoy & Ed Markey
 Nancy Van Aken Marti
 Susan Mazanec
 Lisa Feinberg & Michael McFarland
 Kelly McMann & Gregory York
 Megan & Michael McNamara
 Jani & Doug McWilliams
 Barbara C. Megery
 Marianne Meil
 Scott Miller
 Anonymous
 Nancy R. Moore
 Lisa Moose
 Patricia & Broock Munro
 Karen E. Nordstrom
 Mr. & Mrs. Paul T. Omelsky
 Frank Tascone & Kirsten Parkinson
 Kelly Peppard
 Erin & William Peters
 Kristen Cole & Donald J. Petit
 Judith Z. Phillips
 Loretta & Daniel Pierce
 Carolyn V. Platt
 William Poole
 Carolyn Priemer
 Diana Ramirez & Aaron Proweller
 Michael McIntyre Prunty & M. Lee Maxwell
 Gerda Christine Carlson & Scott Radway
 Daniel & Carolyn Ranke
 Lamar & Virginia Ratcliffe
 Robert & Judith Rawson
 Mary C. Reed
 Clare M. Rimnac PhD &
 Thomas M. Hering PhD
 Kenneth & Amy Rogat
 Ayano & Kevin Russell
 Alik & Peter Rzepka
 Barbara & Robert Sabo
 Patricia & Frederick Schroeder
 Cynthia J. Seaman
 J. Gary Seewald
 Ben Segall
 Jerry Sgro & Heather Ways
 Robert & Yvette Shenk
 Marianne & John Sheridan
 Jim Simler
 Marilyn J. Singer
 Heather & Adam Smith
 Joel Sprayregen
 Richard E. Stamm
 Jennifer & Aaron Steinmetz
 Gary Stevens
 Deedra & Carter Strang

Jennifer Sullivan
 Marc L. Swartzbaugh
 Dan Tanner
 Magdalena Tary-Lehmann
 Linda Taylor
 Joseph H. & Ellen B. Thomas
 Martha Schinagle &
 Kimberly Thompson-Schinagle
 Janelle Tirfagnehu
 Jean Toombs
 Katherine & Kenneth Torgerson
 Robert A. Trimble
 Karen & Robert Tucker
 Don & Jane Underwood
 Eva & Mario Vargas
 Kenneth J. Vinciguerra
 Susan Vodrey
 Thomas E. Wadsworth
 Maureen & John Wangermann
 Heba Wassif
 Steven & Natalie Weigand
 Andrea Weiss
 Bailey & Walt Wells
 Nancy West
 Alison & John Whitney
 Eugene & Marjorie Wiemels
 Maren Wilbur
 Ann & Bryan Willis
 William & Julie Willoughby
 Diana M. Woodbridge
 Beryl Younkin
 Julia Kious Zabell
 Erin & Steven Zelin
 Linda Ziegler
 Mr. & Mrs. Kalman Zucker
 & Family

IN HONOR OF

Kathryn A. Carlson
 Kimberly Dyer
 Matthew Harrington, DDS
 Wael A. Jaber
 Dahlia & Genevieve Liu
 Charlie Mayer
 Ray Ostanek & Jan Elder
 Gloria Plevin
 Florence Spurney
 Julie West

IN MEMORY OF

Delphine Dzenko
 Reilly Girardot

*AS OF OCTOBER 31, 2021

Financial Information FY21

(Unaudited)

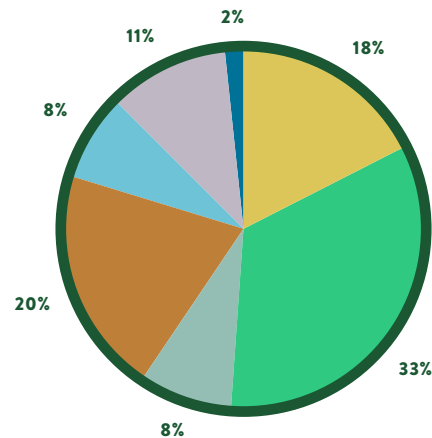
REVENUE: CONTRIBUTED

- INDIVIDUALS
\$244,892
- CORPORATIONS/FOUNDATIONS
\$463,103
- GOVERNMENT
\$115,311
- EVENTS
(NET of COG – Plant Sale/Art on View)
\$280,194
- ENDOWMENT
(Distribution)
\$105,516

REVENUE: EARNED

- PROGRAM FEES
\$149,495
- FACILITY RENTALS/MERCHANDISE
(NET)
\$22,939

TOTAL REVENUE: \$1,381,450

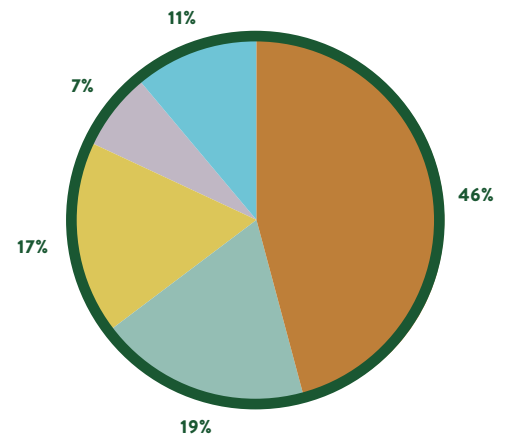


EXPENSES

- EDUCATION AND OUTREACH
\$553,745
- FACILITIES & LAND MANAGEMENT
\$228,721
- FUNDRAISING
\$204,645
- MARKETING
\$84,266
- MANAGEMENT & GENERAL
\$132,417

TOTAL EXPENSES: \$1,203,794

NET OPERATING REVENUE: \$177,656**



**Excludes depreciation and other year-end adjustments.

The Nature Center at Shaker Lakes extends its deepest appreciation to the many donors, members, and institutional supporters whose generous contributions helped ensure a successful year.

We apologize for any omissions. If your name has been omitted or listed incorrectly, please contact Rosalind Soltow at 216.321.5935 ext. 246 or soltow@shakerlakes.org.

RECYCLED
FPO



ADDRESS
SERVICE
REQUESTED

Conserving a natural
area, connecting people with
nature, and inspiring
environmental stewardship

SHAKERLAKES.ORG



#SHAKERLAKES

2600 South Park Blvd.
Cleveland, Ohio 44120
216.321.5935

naturecenter@shakerlakes.org